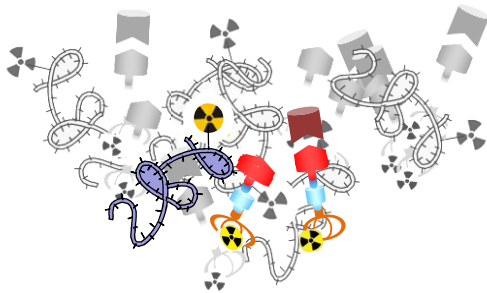




Testing the therapeutic and diagnostic potential of molecular and supramolecular carriers in vivo

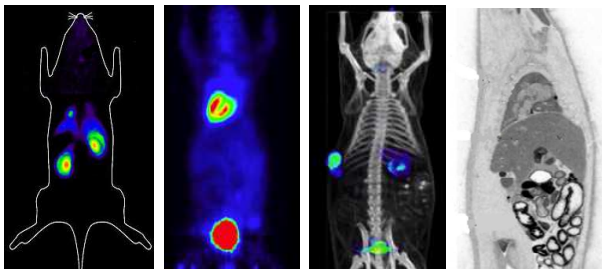
Molecular and supramolecular carriers for radionuclide are provided and selected by Erasmus MC as well as by the other partners



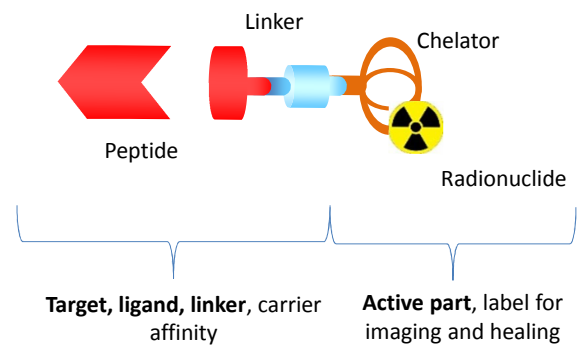
The molecule potential for detecting and treating neuroendocrine tumors in preclinical *in vivo* models will be evaluated.



We will evaluate the compounds by multimodality preclinical imaging



Scheme of a general radionuclide



Potential transfer into clinics

